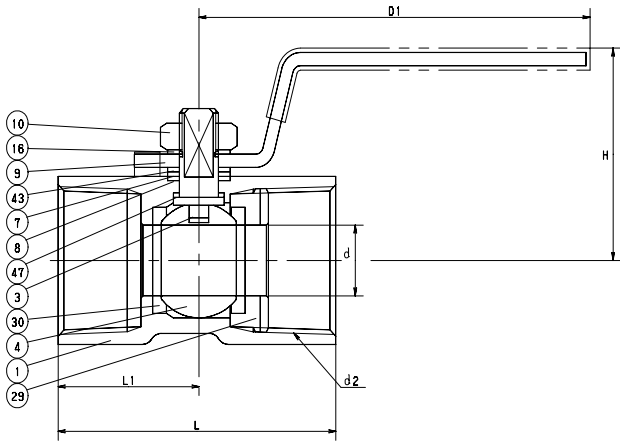


FORGED BRASS BALL VALVE

One Piece Body • Reduced Port
 G/F + PTFE Seats/Seals • Blowout Proof Stem
 Chrome Plated Ball • Stainless Steel Lever Handle

CODE # 51 (AKTK) THREADED



| STANDARDS | |
|----------------|--------------|
| END TO END | KITZ |
| END CONNECTION | ANSI B1.20.1 |
| WALL THICKNESS | KITZ |

| PRESSURE/TEMPERATURE | |
|--|--|
| 150 PSI - SATURATED STEAM TO 366°F | |
| 600 PSI - NON-SHOCK COLD WATER, OIL OR GAS | |

NOTE: PRESSURE/TEMPERATURE CHART - PAGE BV-29

| MATERIAL LIST | | |
|---------------|---------------|-------------------------------------|
| NO. | NAME OF PART | SPECIFICATION |
| 1 | BODY | FORGED BRASS (B283, C37700) |
| 3 | STEM | SPECIAL BRASS (KITZ "K" METAL) |
| 4 | BALL | (1) FORGED BRASS (B283, C37700) |
| 7 | GLAND | STAINLESS STEEL (A276 TYPE 430) |
| 8 | GLAND PACKING | G/F PTFE |
| 9 | HANDLE | (2) STAINLESS STEEL (A276 TYPE 430) |
| 10 | HANDLE NUT | CARBON STEEL |
| 16 | SPRING WASHER | CARBON STEEL |
| 29 | INSERT | FORGED BRASS (B124, C37700) |
| 30 | BALL SEATS | G/F PTFE |
| 43 | SPRING | STAINLESS STEEL (A276 TYPE 304) |
| 47 | THRUST WASHER | REINFORCED PTFE |

NOTES: (1) CR. PLATING
 (2) WITH PLASTIC COVERING

| DIMENSIONS - WEIGHTS - QUANTITIES | | | | | | | |
|-----------------------------------|------|------|------|------|------|-------------------------------|-----|
| d2 SIZE | d | H | D1 | L | L1 | APPROX. CARTON NET WT. QTY | |
| 1/4 | .18 | 1.22 | 2.36 | 1.54 | .75 | 22 | 120 |
| 3/8 | .28 | 1.42 | 2.76 | 1.73 | .83 | 26 | 120 |
| 1/2 | .36 | 1.61 | 3.35 | 2.22 | 1.08 | 51 | 120 |
| 3/4 | .49 | 1.73 | 3.35 | 2.32 | 1.18 | 61 | 96 |
| 1 | .63 | 1.89 | 3.94 | 2.79 | 1.42 | 54 | 54 |
| 1 1/4 | .79 | 1.89 | 3.94 | 3.07 | 1.57 | 52 | 32 |
| 1 1/2 | .96 | 2.56 | 4.92 | 3.27 | 1.67 | 47 | 24 |
| 2 | 1.26 | 2.83 | 4.92 | 3.94 | 2.01 | 52 | 16 |

SPECIFICATION

Approved valve shall have one piece forged brass body, blowout proof stem, G/F + PTFE seats/seals, chrome plated ball, stainless steel handle and reduced port design. Valves shall be pressure rated to 150 WSP/600 WOG.

KITZ Code No. 51 (AKTK) Threaded Ends