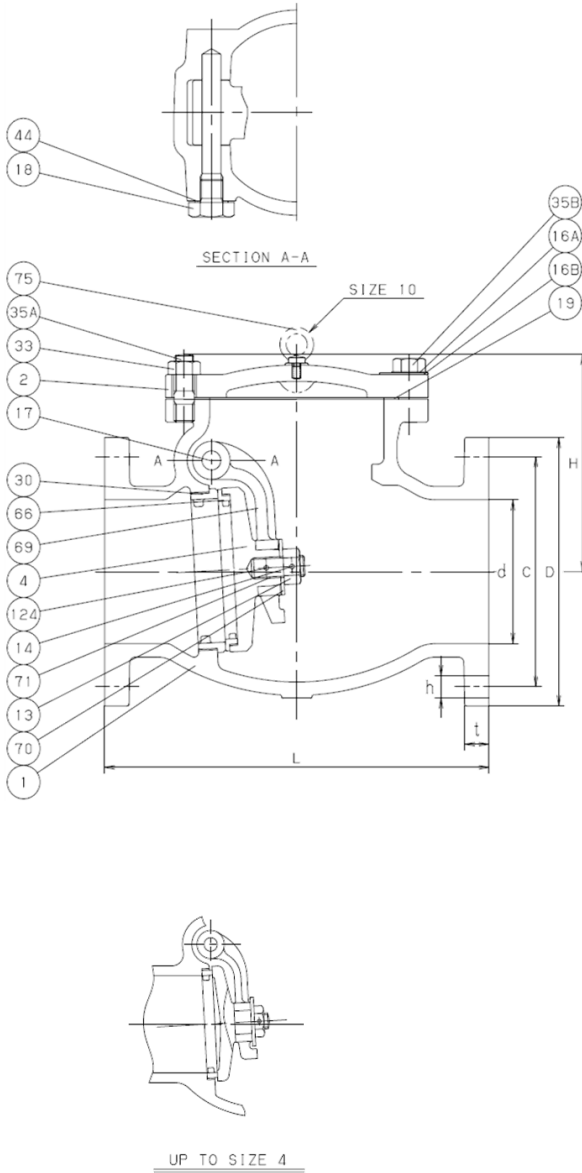


# SWING CHECK CLASS 125 CAST IRON

Bolted Cover • Bronze Mounted  
Swing Type Disc

CODE # 78 (125FCO)



## STANDARDS

END TO END	ANSI B16.10, CLASS 125
END CONNECTION	ANSI B16.1, CLASS 125
DESIGN	MSS SP-71, TYPE I
MILITARY	MSS SP-71, TYPE I

## PRESSURE/TEMPERATURE

125 PSI - SATURATED STEAM TO 353°F
- FLUID TO 450°F
200 PSI NON-SHOCK COLD WATER, OIL OR GAS

## MATERIAL LIST

NO.	NAME OF PART	SPECIFICATION
1	BODY	CAST IRON (A126 CLASS B)
2	COVER	CAST IRON (A126 CLASS B)
4	DISC (2-4)	CAST BRONZE (B62)
	(5-10)	CAST IRON (A126 CLASS B)
13	DISC NUT	CARBON STEEL
14	SPLIT PIN	STAINLESS STEEL (TYPE 304)
16A	NAME PLATE	ALUMINUM
16B	NAME PLATE WASHER	CARBON STEEL
17	HINGE PIN	FORGED BRASS (B124, C37700)
18	PLUG	CARBON STEEL
19	GASKET	GRAPHITE
30	BODY SEAT RING	CAST BRONZE (B62)
33	COVER NUT	CARBON STEEL (CLASS 4)
35A	COVER BOLT	CARBON STEEL (A307 Gr.B)
35B	COVER BOLT	CARBON STEEL (CLASS 4.8)
44	GASKET	SOFT STEEL
66	DISC SEAT RING	CAST BRONZE (B62)
69	ARM	STAINLESS STEEL (A351 Gr.CF8)
70	WASHER	CARBON STEEL (A36)
71	DISC BOLT	CARBON STEEL (A576 Gr.1025)
75	EYE BOLT	CARBON STEEL
124	SPRING PIN	CARBON STEEL

## DIMENSIONS - WEIGHTS

SIZE	d	H	L	D	BOLT HOLE			BOLT SIZE	t	APPROX. NET WT.
					C	No.	h			
2	1.97	4.45	8.00	6.00	4.75	4	3/4	5/8	0.62	22
2½	2.56	4.84	8.50	7.00	5.50	4	3/4	5/8	0.69	30
3	3.15	5.63	9.50	7.50	6.00	4	3/4	5/8	0.75	41
4	3.94	6.89	11.50	9.00	7.50	8	3/4	5/8	0.94	66
5	4.92	8.15	13.00	10.00	8.50	8	7/8	3/4	0.94	111
6	5.91	8.86	14.00	11.00	9.50	8	7/8	3/4	1.00	152
8	7.87	10.67	19.50	13.50	11.75	8	7/8	3/4	1.12	265
10	9.84	12.56	24.50	16.00	14.25	12	1	7/8	1.19	412