

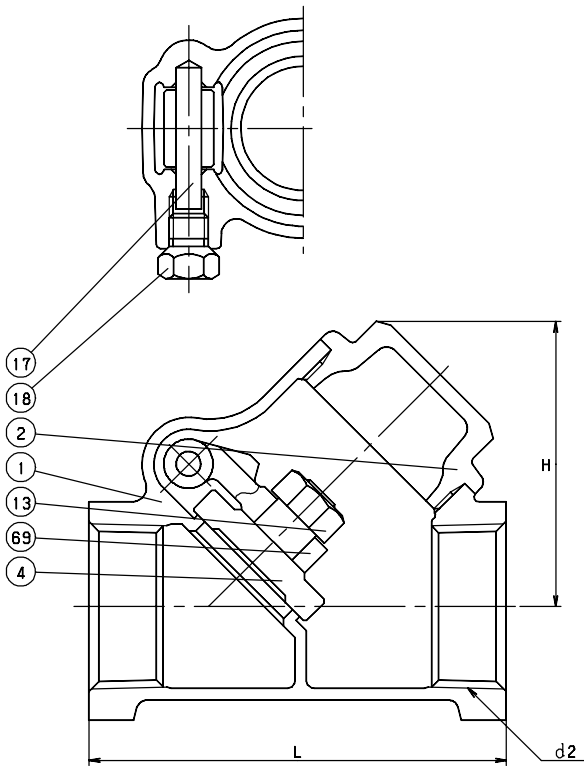
# CHECK

## CLASS 150 BRONZE

Y-Pattern Swing Check • Integral Seat  
Swing Type Disc

BRONZE CHECK

**CODE # 29 (AK150YR)  
THREADED**



### STANDARDS

END TO END	KITZ
THREADED ENDS	ANSI B1.20.1
DESIGN	MSS SP-80, TYPE 3
MILITARY	MSS SP-80, TYPE 3

### PRESSURE/TEMPERATURE

150 PSI - SATURATED STEAM TO 366°F - FLUID TO 406°F 300 PSI NON-SHOCK COLD WATER, OIL OR GAS
--

### MATERIAL LIST

NO.	NAME OF PART	SPECIFICATION
1	BODY	CAST BRONZE (ASTM B62)
2	CAP	FORGED BRASS (B283, C37700)
4	DISC	CAST BRONZE (ASTM B62)
13	DISC NUT	BRASS ROD (B16)
17	HINGE PIN	COPPER
18	PLUG	BRASS ROD (B16)
69	ARM	CAST BRONZE (ASTM B62)

### DIMENSIONS - WEIGHTS - QUANTITIES

d2 SIZE	H	L	APPROX. NET WT.	CARTON QTY
3/8	1.54	2.13	0.44	96
1/2	1.54	2.36	0.54	80
3/4	1.93	2.83	1.00	48
1	2.28	3.31	1.25	36
1 1/4	2.76	3.90	2.00	24
1 1/2	3.11	4.45	2.81	16
2	3.74	5.16	5.13	8
2 1/2	4.49	6.38	12.50	4
3	5.20	7.32	16.00	3