

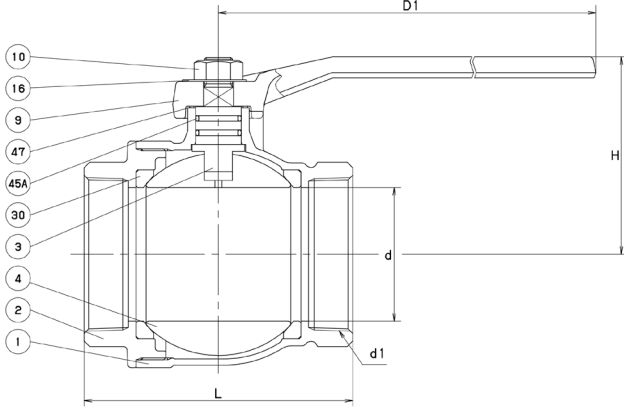
# LEAD-FREE COPPER ALLOY BALL

## MAINTENANCE FREE DOUBLE O-RING STEM SEALS

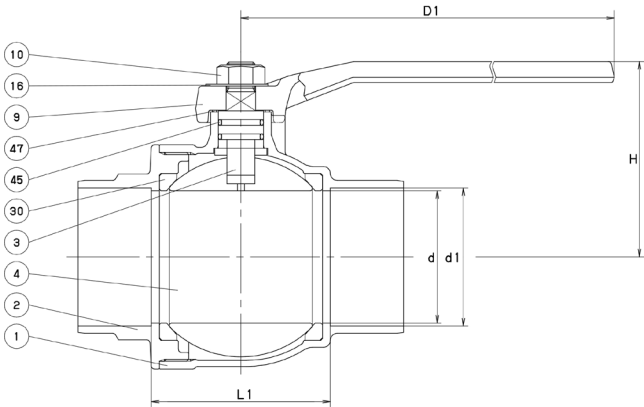
Two-Piece Body • Full Port • 304 SS / Vented Ball • Blowout Proof Stem • PTFE Seats

\*NSF/ANSI 61-G & NSF/ANSI 372

### CODE #858 (AKSZAN) THREADED (2½" - 4")



### CODE #859† (CSZAN) SOLDER (2½" & 3")



#### STANDARDS

END TO END	KITZ STD.
THREADED ENDS	ASME B1.20.1
SOLDER ENDS	ASME B16.18†
WALL THICKNESS	KITZ STD.
DESIGN	MSS SP-110

#### PRESSURE - TEMPERATURE

600 PSI NON-SHOCK COLD WORKING PRESSURE (CWP)†  
400 PSI (CWP) 4" ONLY  
150 PSI WORKING STEAMPRESSURE (WSP)

#### MATERIAL LIST

NO.	NAME OF PART	SPECIFICATION
1	BODY (2½", 3") (4")	LF FORGED BRASS (C46750) LF CAST BRONZE (C89530)
2	BODY CAP (2½", 3") (4")	LF FORGED BRASS (C46750) LF CAST BRONZE (C89530)
3	STEM	LF BRASS ROD (C46750)
4	BALL (Vented)	STAINLESS STEEL (304)
9	HANDLE	DUCTILE IRON
10	HANDLE NUT	CARBON STEEL
16	NAME PLATE	ALUMINUM
30	BALL SEAT	PTFE
45A	O-RING	FKM
45B	O-RING (4" only)	FKM
47	THRUST WASHER	PTFE

#### NOTES:

† P-T LIMIT FOR SOLDER JOINT VALVES PER ASME B16.18

#### DIMENSIONS & WEIGHTS

SIZE d2	d	H	D1	L	L1	d1		Wt. Lb/Kg	Crtn Qty
						Max	Min		
in	2½	2.56	3.97	7.87	5.43	3.51	2.633	2.628	10.50
mm		65.0	100.8	199.9	137.9	89.2	66.9	66.8	
in	3	2.99	4.44	11.81	6.57	4.06	3.133	3.128	15.00
mm		75.9	112.8	300.0	166.9	103.1	79.6	79.5	
in	4	3.94	5.15	11.81	7.60	-	-	-	22.15
mm		100.1	130.8	300.0	193.0	-	-	-	



Certified to  
NSF/ANSI 61-G

\*Product complies with NSF/ANSI Standard 61 Annex G, NSF/ANSI Standard 372 and conforms with lead content requirements for "lead free" plumbing as defined by California, Vermont, Maryland, and Louisiana state laws and the U.S. Safe Drinking Water Act that went into effect January 2014.