

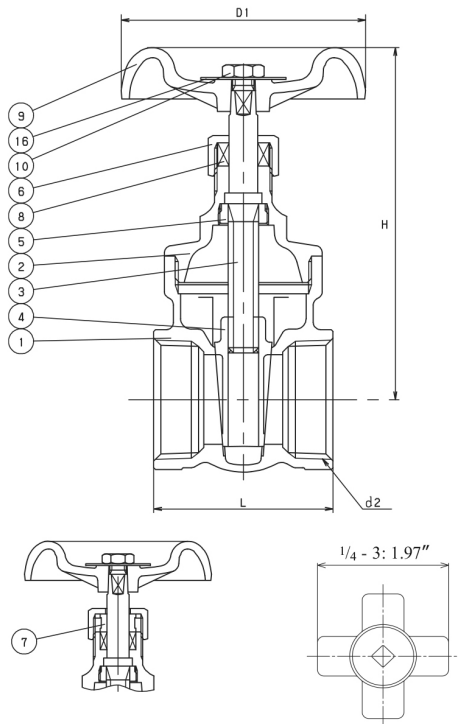
# LEAD-FREE COPPER ALLOY GATE

## CLASS 125

Screw-In-Bonnet • Non-Rising Stem • Solid Wedge

\*NSF/ANSI 61-G & NSF/ANSI 372

### CODE #807 (AKFSN) THREADED (½"-2")



### STANDARDS

END TO END	KITZ STD.
THREADED ENDS	ASME B1.20.1
DESIGN	KITZ STD.

### PRESSURE - TEMPERATURE

200 PSI - NON-SHOCK COLD WORKING PRESSURE (CWP)
125 PSI - WORKING STEAM PRESSURE (WSP)

### MATERIAL LIST

NO.	NAME OF PART	SPECIFICATION
1	BODY	LF FORGED BRASS (C46750)
2	BONNET	LF FORGED BRASS (C46750)
3	STEM	LF BRASS ROD (C46750)
4	DISC	LF FORGED BRASS (C46750)
5	LOCK NUT	LF BRASS ROD (C46750)
6	PACKING NUT	FORGED BRASS (C37700)
7	GLAND	BRASS ROD (B16)
8	GLAND PACKING	ARAMID FIBER w/ GRAPHITE
9	HAND WHEEL	ALUMINUM DIE-CAST
10	WHEEL NUT	CARBON STEEL
16	NAME PLATE	ALUMINUM

### DIMENSIONS & WEIGHTS

SIZE d2	H	D1	L	L1	d1		Wt. Lb/Kg	Crtn Qty
					Max	Min		
in	½	2.95	1.97	1.65	0.77	0.631	0.627	96
mm		75.0	50.0	41.9	19.6	16.0	15.9	
in	¾	3.39	2.17	1.85	0.86	0.881	0.877	32
mm		86.0	55.1	47.0	21.8	22.4	22.3	
in	1	3.82	2.36	1.97	0.94	1.132	1.128	36
mm		97.0	60.0	50.0	23.9	28.8	28.7	
in	1¼	4.61	2.76	2.36	1.09	1.382	1.378	36
mm		117.0	70.0	59.9	27.7	35.1	35.0	
in	1½	4.96	3.15	2.48	1.21	1.633	1.628	30
mm		126.0	80.0	63.0	30.7	41.5	41.4	
in	2	6.06	3.54	2.83	1.34	2.133	2.128	18
mm		153.9	90.0	71.9	34.0	54.2	54.1	



Certified to  
NSF/ANSI 61-G

\*Product complies with NSF/ANSI Standard 61 Annex G, NSF/ANSI Standard 372 and conforms with lead content requirements for "lead free" plumbing as defined by California, Vermont, Maryland, and Louisiana state laws and the U.S. Safe Drinking Water Act that went into effect January 2014.