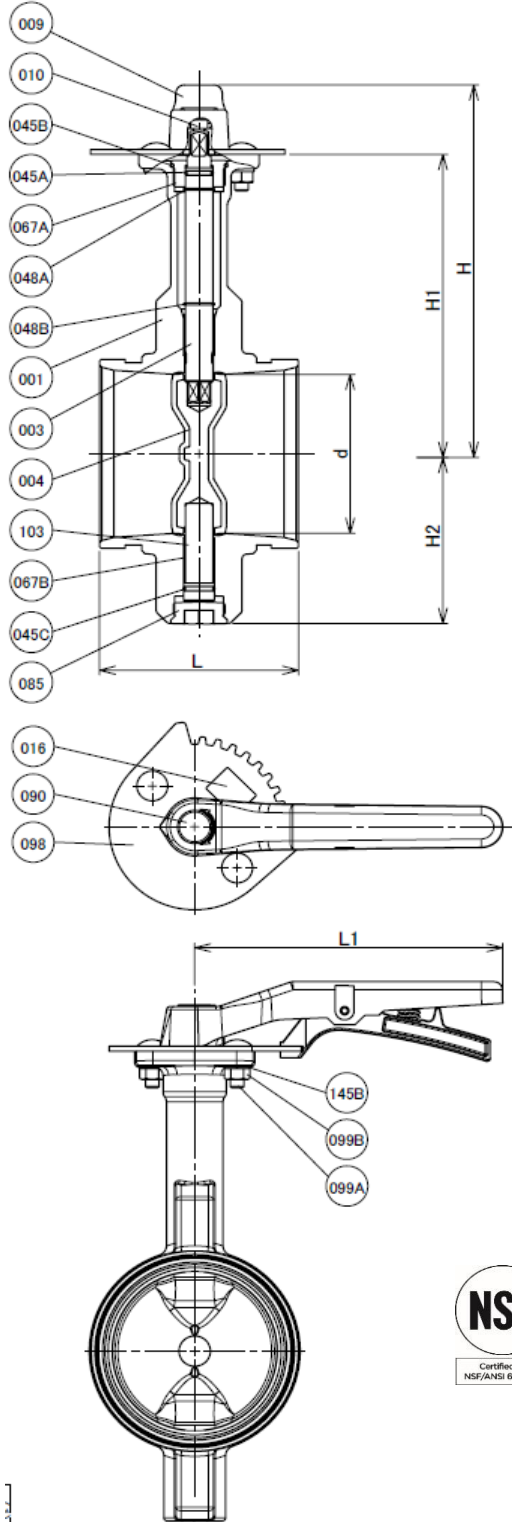


GROOVED END BUTTERFLY

2"- 6" Lever Operated

Nylon Coated Ductile Iron Body • EPDM Coated DI Disc*
NSF/ANSI 61 & 372

CODE No. 4244L (300SGECE)



STANDARDS

DESIGN STANDARD	MSS SP-67
END CONNECTION	AWWA C606-15

PRESSURE - TEMPERATURE

300 PSI (2.1 MPa) - NON-SHOCK COLD WORKING PRESSURE (CWP)
32~212°F - Continuous (-4~230°F Intermittent)

MATERIAL LIST

NO.	NAME OF PART	SPECIFICATION
1	BODY†	DUCTILE IRON, NYLON COATED
3	STEM	410SS - 2, 2½ 420SS - 3-12
4	DISC*	DUCTILE IRON, EPDM COATED
9	HANDLE	ALUMINUM DIE-CAST
10	HANDLE BOLT	ALLOY STEEL
16	NAME PLATE	PET
45A	O-RING	EPDM
45B	O-RING	EPDM
45C	O-RING	EPDM
48A	SNAP RING	STAINLESS STEEL
48B	SNAP RING	STAINLESS STEEL
67A	BEARING	POLYACETAL
67B	STEM BEARING	METAL BACKED PTFE
85	PLUG	ZDC2
90	CAP	PVC
98	INDEX PLATE	ALUMINUM ALLOY
99A	SET BOLT	CARBON STEEL
99B	NUT	CARBON STEEL
103	BOTTOM STEM	410SS - 2, 2½ 420SS - 3-12
145B	SPRING WASHER	CARBON STEEL

NOTES:

† After Coating, Body is 100% Holiday Tested

* EPDM coating is Chlorine and Chloramine resistant

DIMENSIONS & WEIGHTS

SIZE	Units	d	L	L1	H	H1	H2	Wt. Lb/Kg	Cv
2	in	1.77	3.19	7.09	7.40	5.75	2.64	4.56	64
	mm	45.0	81.0	180.0	188.0	146.0	67.0	2.1	
2½	in	2.36	3.81	7.09	7.76	6.02	2.95	6.00	198
	mm	59.9	96.8	180.0	197.0	153.0	75.0	2.7	
3	in	2.91	3.81	7.09	8.43	6.73	3.66	8.18	349
	mm	74.0	96.8	180.0	214.0	171.0	93.0	3.7	
4	in	3.78	4.56	7.09	9.61	7.13	4.06	11.02	647
	mm	96.0	115.8	180.0	244.0	181.0	103.0	5.0	
5	in	4.69	5.81	9.06	10.35	8.23	5.00	22.91	998
	mm	119.1	147.6	230.0	263.0	209.0	127.0	10.4	
6	in	5.71	5.81	9.06	10.87	8.74	5.47	27.14	1632
	mm	145.0	147.6	230.0	276.0	222.0	139.0	12.3	



This product complies with NSF/ANSI Standards 61 and 372 and conforms with lead content requirements for "Lead Free" plumbing as defined under the U.S. Safe Drinking Water Act that went into effect January 2014

WARNING: Cancer and Reproductive Harm - www.P65Warnings.ca.gov.

KITZ