

BUTTERFLY VALVES - 150PSI

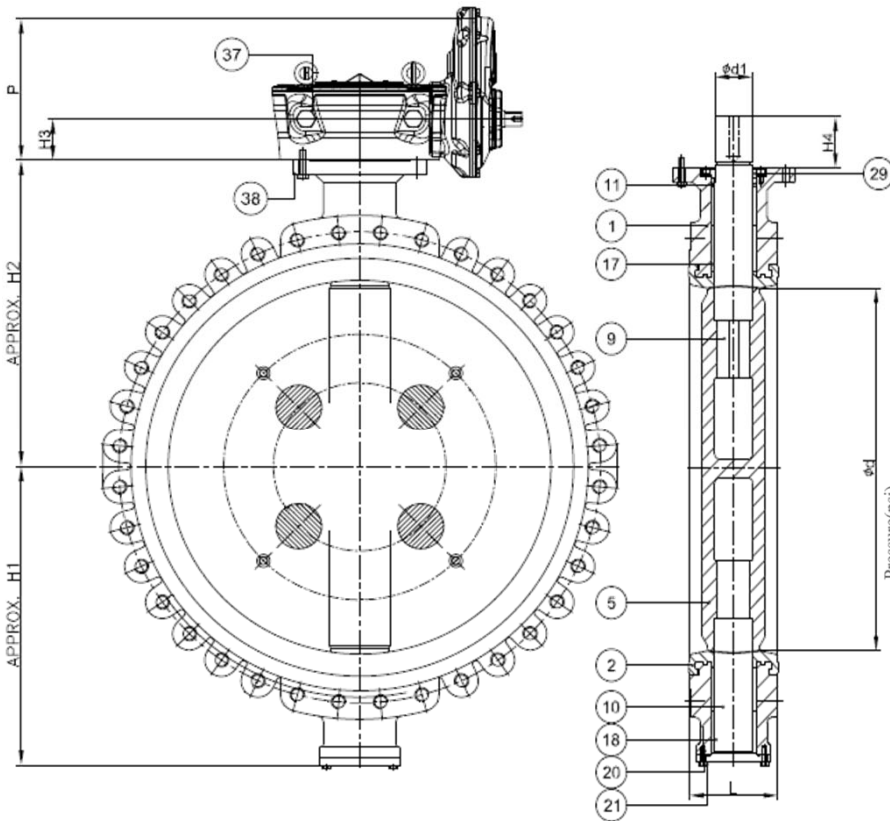
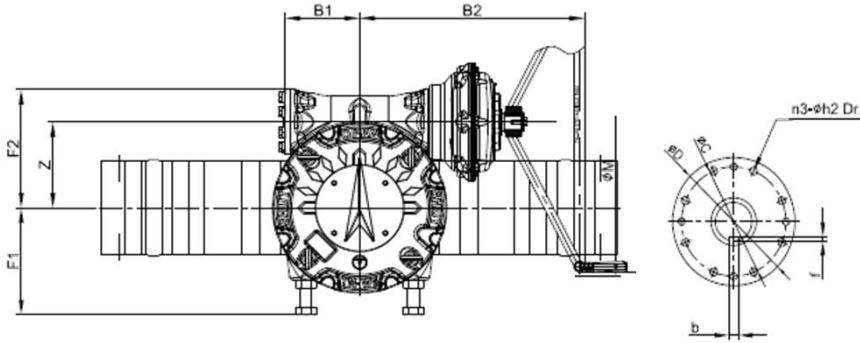
Lug Design • Ductile Iron Body
Bi-Directional • ISO Mounting Pad • Gear Operator
SIZE 30" 36" 42"

DESIGN STANDARDS: API609 Cat.A , MSS SP-67 END CONNECTION: ASME B16.47 Series A CL.150-FF

CODE #6131EGC

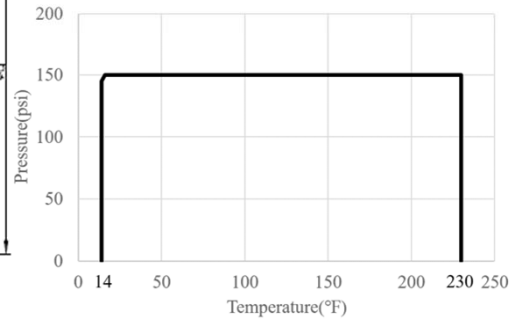
DESIGN FEATURES

- Seat** Liner is an elastomeric seat inserted into the body. Good intergral support, stable and solid, stretch resistant, leakage proof.
Seat to flange seal eliminates the need for gaskets.
- Disc** Precision profile provides bubble-tight shut-off, assures minimum torque and longer seat life.
- Mounting Flange** ISO 5211 mounting flange accommodates direct mounting of all types of actuators.
- Blow-out Proof S** The upper stem is fully retained by the retainer plate under pressure in unlikely event of primary seal fail.
- Deadend Service:** Suitable for Bi-directional Deadend Service at full differential pressure



| MATERIAL LIST | | |
|---------------|----------------|---|
| NO. | NAME OF PART | SPECIFICATION |
| 1 | BODY | DUCTILE IRON (A536 Gr.65-45-12) |
| 2 | BODY SEAT | EPDM |
| 5 | DISC | STAINLESS STEEL (A351 CF8M) |
| 9 | STEM(MAIN) | STAINLESS STEEL (A479 Type 410) |
| 10 | STEM(STUB) | STAINLESS STEEL (A479 Type 410) |
| 11 | O Ring | EPDM |
| 17 | BUSH(MAIN) | NICKEL ALUMINUM BRONZE (B148 C95400) |
| 18 | BUSH(STUB) | NICKEL ALUMINUM BRONZE (B148 C95400) |
| 20 | END COVER | CARBON STEEL (A36) |
| 21 | END COVER BOLT | A193 B7 |
| 29 | TOP RETAINER | STAINLESS STEEL (A240 Type 304) |
| 37 | GEAR BOX | |
| 38 | GEAR BOX BOLT | A193 B7 |

PRESSURE-TEMPERATURE RATING



DIMENSIONS

| SIZE | d | L | H1 | H2 | H3 | B1 | B2 | F1 | F2 | Z | P | M | C | D | n3 | h2 | d1 | H4 | b | f | KEY | Lbs. Kgs. | ISO 5211 |
|---------|-------|------|-------|-------|------|------|-------|-------|-------|------|-------|-------|-------|-------|------|------|------|------|------|------|---------|-----------|----------|
| in. 30 | 28.78 | 6.50 | 22.09 | 23.03 | 3.74 | 7.87 | 20.08 | 8.86 | 10.04 | 7.28 | 12.99 | 27.95 | 10.00 | 11.81 | 0.31 | 0.71 | 2.83 | 5.12 | 0.79 | 0.30 | 20 x 12 | 1588 | F25 |
| mm 750 | 731 | 165 | 561 | 585 | 95 | 200 | 510 | 225 | 255 | 185 | 330 | 710 | 254 | 300 | 8 | 18 | 72 | 130 | 20 | 7.5 | | 721 | |
| in. 36 | 33.86 | 7.88 | 26.18 | 27.20 | 3.74 | 7.87 | 20.08 | 8.86 | 10.04 | 7.28 | 12.99 | 27.95 | 11.73 | 13.78 | 0.31 | 0.87 | 3.15 | 5.51 | 0.87 | 0.35 | 22 x 14 | 2309 | F30 |
| mm 900 | 860 | 200 | 665 | 691 | 95 | 200 | 510 | 225 | 255 | 185 | 330 | 710 | 298 | 350 | 8 | 22 | 80 | 140 | 22 | 9 | | 1048 | |
| in. 42 | 39.76 | 9.88 | 31.30 | 32.32 | 4.33 | 8.46 | 24.02 | 10.63 | 12.60 | 9.06 | 17.32 | 31.50 | 14.02 | 16.34 | 0.31 | 1.30 | 3.94 | 5.51 | 1.10 | 0.39 | 28 x 16 | 3165 | F35 |
| mm 1050 | 1010 | 251 | 795 | 821 | 110 | 215 | 610 | 270 | 320 | 230 | 440 | 800 | 356 | 415 | 8 | 33 | 100 | 140 | 28 | 10 | | 1436 | |

BUTTERFLY VALVES - 150PSI
#6131EGC SIZE 30" 36" 42"
Technical Data

Operating Torques

| Operating torque (in. lbs.) | | | | | |
|------------------------------|----------|--------|--------|--------|--------|
| SIZE | ΔP (psi) | | | | |
| | 50 | 100 | 150 | 200 | 230 |
| 30 | 29482 | 56537 | 83593 | 109102 | 126108 |
| 36 | 46652 | 88272 | 129892 | 169134 | 195296 |
| 42 | 78820 | 148317 | 217815 | 283341 | 327026 |

MAST

| MAST (in. lbs.) | |
|------------------|--------------------------------|
| SIZE | Stem material A479 Type 410 |
| 30 | 305767 |
| 36 | 446279 |
| 42 | 699450 |

* All torque values include a 20% safety factor. Values are for clean, static water at a ambient temperature.

Flange bolt size

| Bolt size | | | | | | | | | | | |
|-----------|------|---------------------------|-------------------------------|------------------------|------------------|-----|-------------------------|-----------------------------|------------------------|------------------|-----|
| Position | n1 | | | | | n2 | | | | | |
| | SIZE | Tap depth X1 (inch) | Flange thickness (inch) | Bolt size [※] | | pcs | Tap depth X2 (mm) | Flange thickness (mm) | Bolt size [※] | | pcs |
| | | | | n1 h taps | length (inch) | | | | n2 h taps | length (inch) | |
| | 30 | 1.38 | 2.94 | 1 1/4"-8UN | 4 1/4" | 4 | 1.57 | 2.94 | 1 1/4"-8UN | 4 3/8" | 24 |
| | 36 | 1.38 | 3.56 | 1 1/2"-8UN | 4 7/8" | 4 | 1.57 | 3.56 | 1 1/2"-8UN | 5" | 28 |
| | 42 | 1.57 | 3.81 | 1 1/2"-8UN | 5 1/4" | 8 | 1.77 | 3.81 | 1 1/2"-8UN | 5 1/2" | 28 |

※ Bolt length for ASME B16.47 Class 150 Series A flange thickness.

