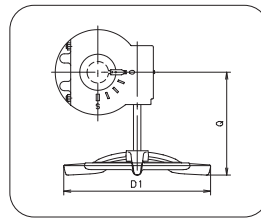
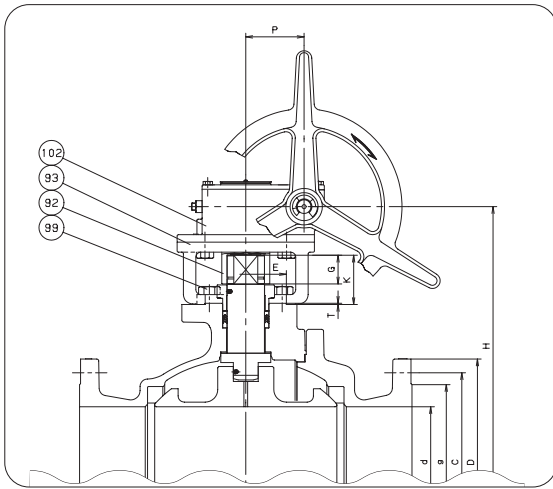
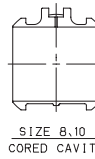
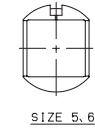
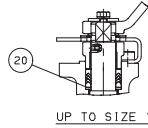
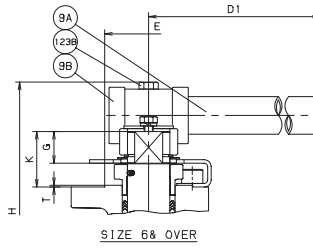
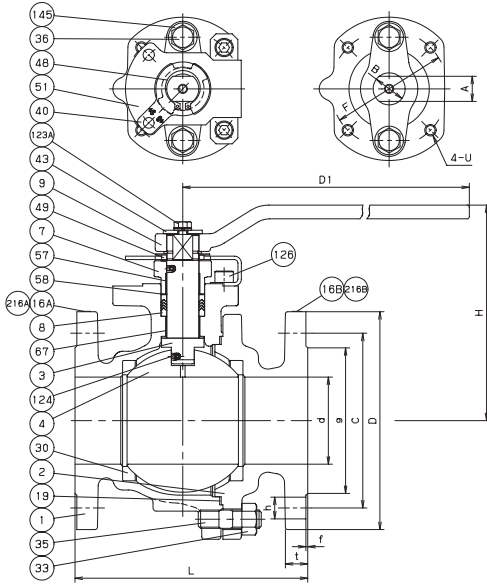
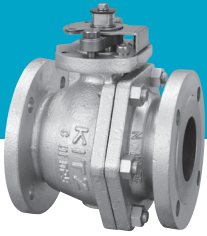


(G-)150UTDZM (G-)150UTDZM-FS



MATERIAL LIST

No.	Name of Parts	Materials
1	BODY	A351 Gr. CF8M
2	BODY CAP	A351 Gr. CF8M
3	STEM	A276 TYPE 316
4	BALL	A276 TYPE 316 or A351 Gr. CF8M
7	GLAND	A351 Gr. CF8
8	GLAND PACKING	(G-)150UTDZM/(G-)150UTDZM-FS PTFE/FLEXIBLE GRAPHITE
9	HANDLE	DUCTILE IRON (UP TO SIZE 5)
9A	HANDLE BAR	CARBON STEEL (SIZE 6 & OVER)
9B	HANDLE HEAD	DUCTILE IRON (SIZE 6 & OVER)
16	NAME PLATE	A276 TYPE 304
16	LEV PLATE	A276 TYPE 304
19	GASKET	(G-)150UTDZM/(G-)150UTDZM-FS PTFE/FLEXIBLE GRAPHITE
20	PACKING WASHER	A276 TYPE 316L (UP TO SIZE 1)
30	BALL SEAT	HYPATITE® PTFE
33	CAP NUT	A194 Gr. 8M
35	CAP BOLT	A193 Gr. B8M
36	GLAND BOLT	STAINLESS STEEL
40	KEYLOCK PLATE	A276 TYPE 304
43	HANDLELOCK PLATE	A276 TYPE 304
48	SNAP RING	A276 TYPE 304
49	STOPPER	A276 TYPE 304
51	STOPPER PLATE	A276 TYPE 304
57	GLAND BUSHING	G/F PTFE
58	GLAND WASHER	A276 TYPE 304
67	STEM BEARING	G/F PTFE
92	CONNECTOR	CARBON STEEL
93	BRACKET	DUCTILE IRON
99	BOLT	STAINLESS STEEL
102	GEAR UNIT	
123A	HANDLELOCK PLATE BOLT	STAINLESS STEEL
123B	HANDLE BOLT	STAINLESS STEEL
124	SPRING & PIN	A313 & A276 TYPE 316
126	STOPPER PLATE BOLT	STAINLESS STEEL
145	CONED DISC SPRING	Inconel® 718 or Equivalent
216A	CE PLATE	A276 TYPE 304 (SIZE 1 1/2 & OVER)
216B	ATEX PLATE	A276 TYPE 304

DIMENSIONS

Unit: inch

Nominal Size	End Flange														Mounting Dimensions for Actuator											
	in.	mm	d	H	D1	L	Bolt Hole			Bolt Size			g	t	f	P	Q	A	B	E	F	G	K	T	U	ISO 5211 Flange Type
1/2	15	0.55	4.25	5.12	4.25	3.50	2.38	4	0.62	1/2	1.38	0.44	0.06					0.36	0.47	0.99	1.42	0.35	0.87	0.04	M5	F03
3/4	20	0.75	4.37	5.12	4.62	3.88	2.75	4	0.62	1/2	1.69	0.44	0.06					0.36	0.47	0.99	1.42	0.35	0.87	0.04	M5	F03
1	25	0.95	4.88	7.09	5.00	4.25	3.12	4	0.62	1/2	2.00	0.44	0.06					0.55	0.71	1.38	1.97	0.55	1.18	0.06	M6	F05
1 1/2	40	1.50	5.28	9.06	6.50	5.00	3.88	4	0.62	1/2	2.88	0.56	0.06					0.67	0.87	2.17	2.76	0.67	1.34	0.06	M8	F07
2	50	1.97	5.63	9.06	7.00	6.00	4.75	4	0.75	5/8	3.62	0.62	0.06					0.67	0.87	2.17	2.76	0.67	1.34	0.06	M8	F07
2 1/2	65	2.52	7.05	15.75	7.50	7.00	5.50	4	0.75	5/8	4.12	0.69	0.06					0.87	1.10	2.76	4.02	0.87	1.77	0.08	M10	F10
3	80	3.00	7.44	15.75	8.00	7.50	6.00	4	0.75	5/8	5.00	0.75	0.06					0.87	1.10	2.76	4.02	0.87	1.77	0.08	M10	F10
4	100	3.94	8.82	18.11	9.00	9.00	7.50	8	0.75	5/8	6.19	0.94	0.06					1.06	1.42	3.35	4.92	1.06	2.05	0.08	M12	F12
6	150	5.95	12.40	39.37	15.50	11.00	9.50	8	0.88	3/4	8.50	1.00	0.06					1.42	1.89	3.94	5.51	1.42	2.48	0.08	M16	F14
8	200	7.95	15.98	59.06	18.00	13.50	11.75	8	0.88	3/4	10.62	1.12	0.06					1.81	2.36	5.12	6.50	1.81	3.11	0.08	M20	F16
10	250	9.96	17.64	19.69	21.00	16.00	14.25	12	1.00	7/8	12.75	1.19	0.06	3.68	14.29			1.81	2.36	5.12	6.50	1.81	3.07	0.08	M20	F16